

ROCKVEYOR®



CEMA B+
Troughing Rolls
A Higher Standard

CEMA B+Troughing Rolls

ROCKVEYOR

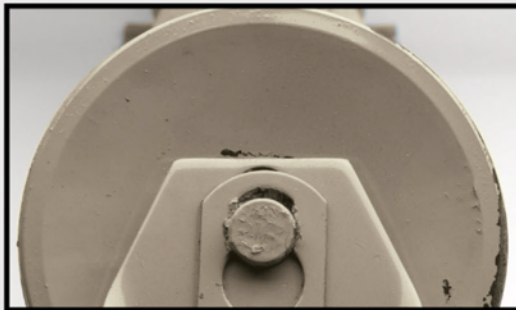
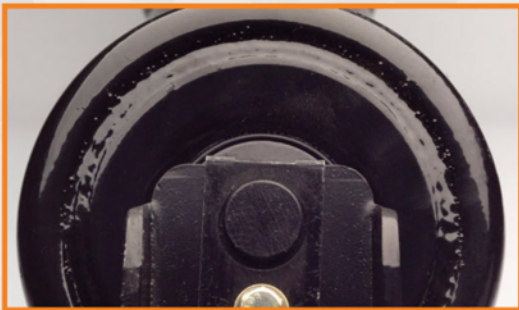


THEM



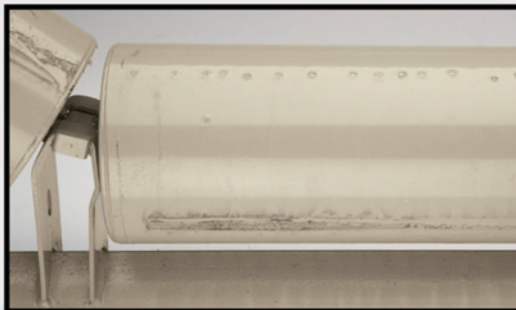
Rolled Ends

The added expense of providing rolled steel ends allows the weld to be placed below the edge of the roller. Other manufacturers weld the edge, which hardens it. This hardened edge causes belt damage (scoring).



Stronger Ends

CEMA B+ rollers have steel ends. Other manufacturers use plastic ends in their CEMA B rollers. Steel is stronger and will outperform plastic.



Powder Coated

Rockveyor's powder coating is much more wear-resistant than the lacquer paint used by other manufacturers. It provides better corrosion protection and it even looks better.

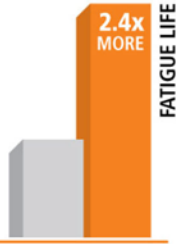
Uni

The s
B+ r
provi
beari

ROCKVEYOR®

Bigger Bearings

Rockveyor CEMA B+ rollers come standard with a 6204 ball bearing. Other manufacturers use a 6203. This larger bearing delivers higher load capacities and longer life.



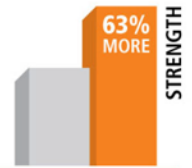
Thicker Walls

Rockveyor CEMA B+ rollers have 20% thicker walls than the competition's CEMA B rollers. They are stronger and they last longer.



Larger Shafts

Rockveyor CEMA B+ rollers come with a 20mm shaft which is 63% stronger than the 17mm shaft found in other manufacturers' CEMA B rollers.



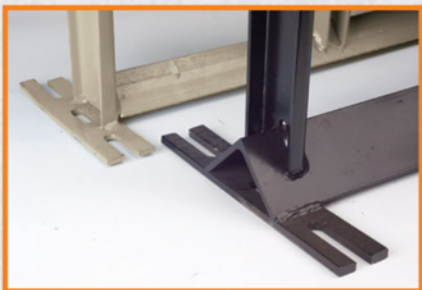
Unique Sealing System

The sealing system used in Rockveyor CEMA B+ rollers has three points of contact. This provides unsurpassed protection for the bearings from water and other contaminants.



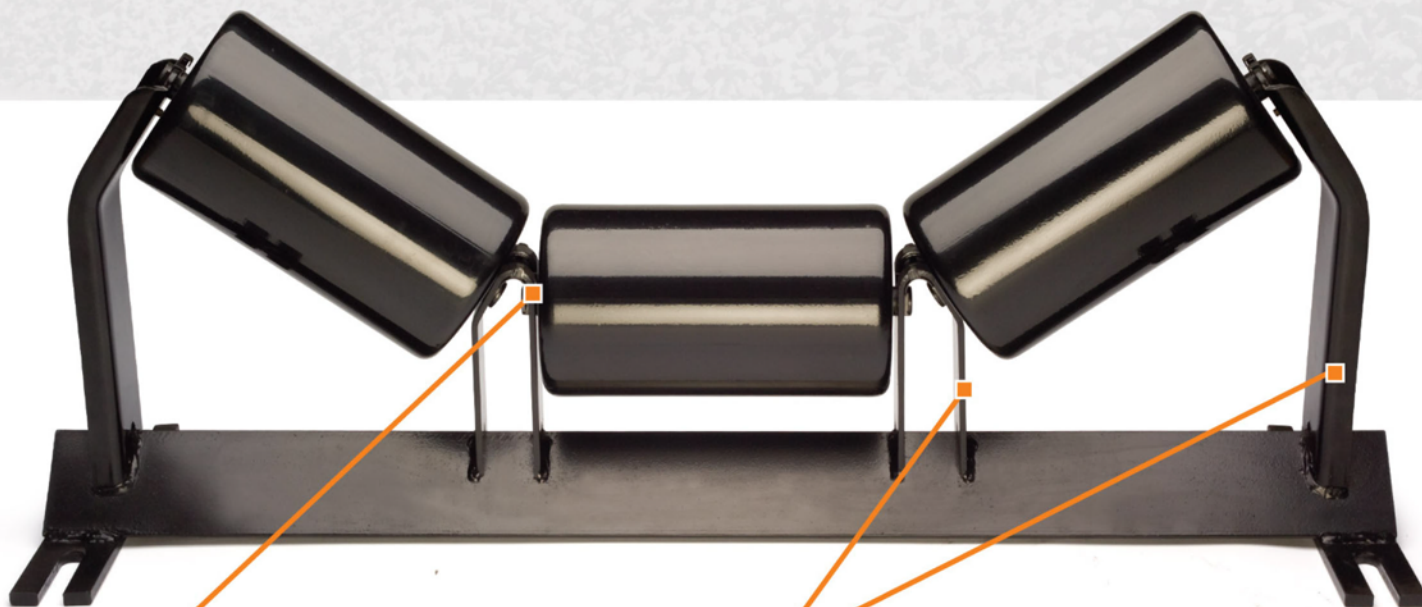
A Higher Standard

UP TO
4x
STURDIER



Beefier Framework

Rockveyor frames have at least 3-inch angle iron across the base where others have 2-inch. In addition, the angle iron extends the length of the frame rather than just to the outside uprights. This design creates a much sturdier frame. Rockveyor frames have up to 60 percent more steel and are up to 4 times more rigid than the competition.



Metal Retaining Clip

The metal clip used by Rockveyor is stronger and more reliable than the plastic clip that others use.

Stronger Uprights

The uprights on Rockveyor frames are thicker and stronger than those of the competition. Sturdier uprights result in less flexing and longer bearing life.

www.Rockveyor.com

ROCKVEYOR[®]

While Rockveyor has tried to ensure the accuracy of the information contained in this document, Rockveyor accepts no responsibility for inaccuracies in, or changes to, such information. © 2008. All rights reserved.

DISTRIBUTED BY: